



OFFICE  
SPACE  
AVAILABLE

AFFORDABLE  
LEASE



# ONE INNOVATION PLACE

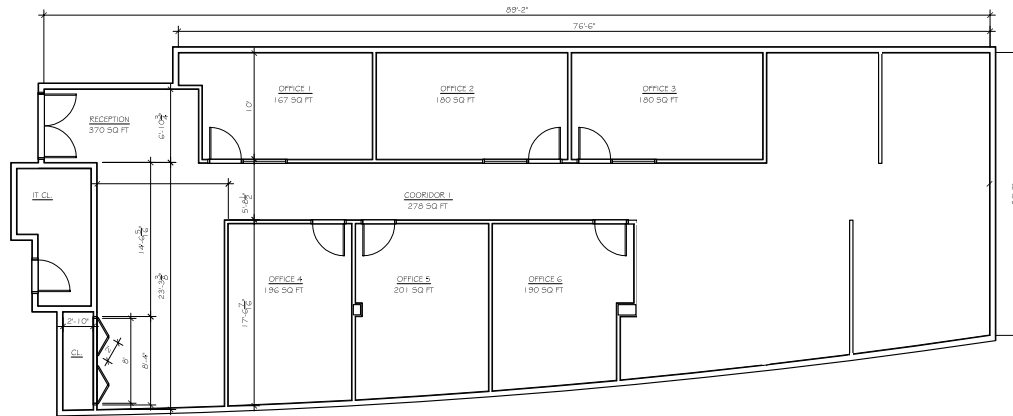
1745 Innovation Drive, Carbondale, Illinois 62903

Modern commercial office space available at affordable rates, conveniently located near the Southern Illinois University campus in the SIU Research Park. See other side for details.

To make an appointment to see this office or for more information, contact:  
Lynn Andersen Lindberg, Interim Executive Director, SIU Research Park  
[lindberg@siu.edu](mailto:lindberg@siu.edu) | 618/453-3427 | 618/453-5040 fax

# SUITE C

2756 square feet



## BENEFITS

- Enterprise Zone
- All commercial utilities: natural gas; three-phase electrical; high-speed Internet; city water and sewer
- Proximity to economic development and business planning services
- Access to SIU and research centers
- Use of Dunn-Richmond Center conference facilities
- Access to copy and fax services within the Research Park

## LOCATION

- Just south of the SIU Arena and Saluki Stadium
- Primary entrance at the northeast corner of Route 51 South and Pleasant Hill Road
- New entrance off Route 51 directly across from the SIU Arena
- University-maintained parking lot
- SIU parking sticker required for all employees; free guest parking

## PERMITTED USES

- Labs and offices for research, testing, and consulting
- Prototype production and assembly
- Conference center
- Divisional and/or corporate headquarters
- Distribution and warehousing
- Professional services to support above activities

## CRITERIA FOR LEASING

- Covenants dictate activities with link to SIU Carbondale preferred
- Formal application to the Research Park for consideration
- Credit reference